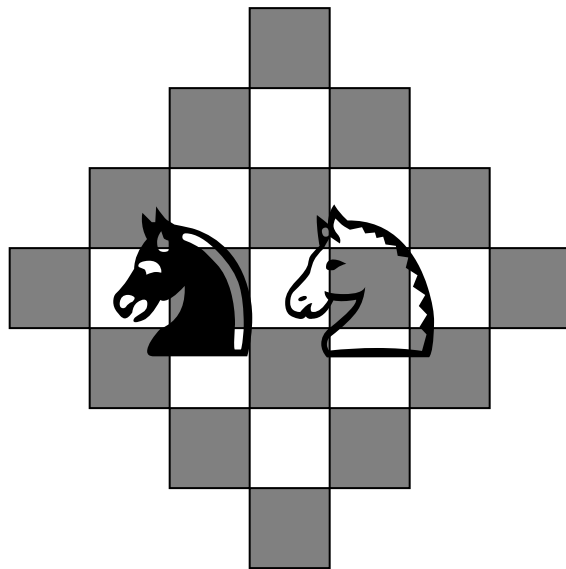


# StrateGems

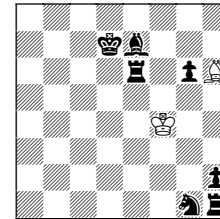


## Ourstanding Awards

September 2022

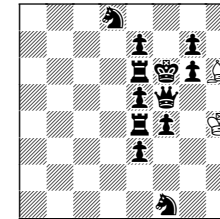
I reviewed thirty helpmates of good quality. Here is my report:

1<sup>st</sup> Prize  
Marko Klasinc &  
Fadil Abdurahmanović



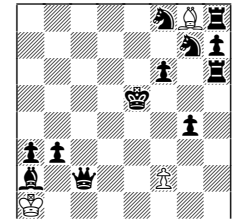
h#6½ (2+7)

2<sup>nd</sup> Prize  
Zlatko Mihajloski



h#5½ (2+12)

3<sup>rd</sup> Prize  
Zlatko Mihajloski



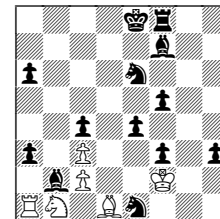
h#5½ 2 solutions (3+12)

**1<sup>st</sup> Prize - (Fadil Abdurahmanović & Marko Klasinc - H2592)** Well-constructed problem which combines Klasinc theme with line opening. The white King and Bishop end up in the same setting prior to mate. The white Bishop's return to h6 is aesthetically pleasing. Beautiful setting and economy. Solution: 1...Kg4! 2.Bf8 Bf4! 3.Ke7 Bxh2! 4.Kf6 Bf4! 5.Rh7 Bh6! 6.Rf7 Kf4! 7.Bg7 Bg5#.

**2<sup>nd</sup> Prize - (Zlatko Mihajloski - H2590)** The white Bishop makes four moves (two switchbacks) in order to remove bPe7. This square is needed for the black King's return. The black King also makes four moves (King's rundlauf). Well-composed problem with good strategy. Solution: 1...Bg5+ 2.Kf7 Bxe7 3.Ke8 Bg5 4.Qf7 Bh6 5.Ke7 Kg4 6.Kf6 Bg5#.

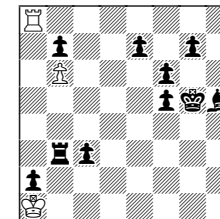
**3<sup>rd</sup> Prize - (Zlatko Mihajloski - H2591)** The white Pawn makes all by one move via different paths, and mates ones as a pawn and the other time as a promoted Queen. Both mates are delivered on the same square. Solution: 1...f4+ 2.Ke4 f5 3.Sge6 fxg6 4.Kf5 e7 5.Kg6 e8Q+ 6.Kg7 Qf7#; 1...Bxb3! 2.Qc4 f3 3.Ke6 fxg4 4.Kf7 g5 5.Kg8 g6 6.Qf7 gxf7#.

4<sup>th</sup> Prize  
Mikola Kolesnik  
& Valery Semenenko



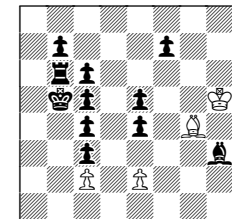
h#3½ b) Ke8→f6 (6+13)

1<sup>st</sup> Honorable Mention  
Zlatko Mihajloski



h#4½ 2 solutions (3+10)

2<sup>nd</sup> Honorable Mention  
Mirko Degenkolbe  
*Ded. to S.B. Dowd 64<sup>th</sup> b'day*



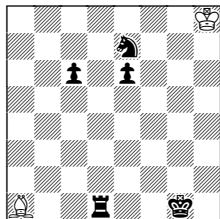
h#5½ 3 solutions (4+11)

**4<sup>th</sup> Prize - (Mikola Kolesnik & Valery Semenenko - H2634)** There are four thematic pieces: white Bishop and Knight and black Bishop and Knight. In a) both Knights are sacrifices while in b) both Bishops are sacrificed. Zilahi as well. Solution: a) 1...Sxa3 2.Sxc2 Bxc2 3.Bxa3 Rd1 4.Be7 Ba4#; b) 1...Bxf3 2.Bxc3 Sxc3 3.Sxf3 Rg1 4.Se5 Sd5#.

**1<sup>st</sup> Honorable Mention - (Zlatko Mihajloski - H2636)** Two solutions with two white Rook sacrifices. In one solution the white Rook enables wpB6 to Queen while in the other, the black Rook does the same. Both mates are model. Solution: 1...Ra6 2.bxa6 b7 3.Bg4 b8Q 4.Kh5 Qg8 5.g5 Qh7#; 1...Rh8 2.Ra3 Rh6 3.Ra7 bxa7 4.gxh6 a8Q 5.Kg6 Qg8#.

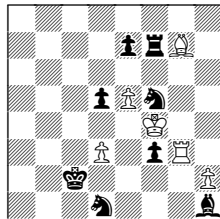
**2<sup>nd</sup> Honorable Mention - (Mirko Degenkolbe - H6339)** A complex problem with three solutions. Two mates are on the same square by two different white pieces. In the third solution, the white Bishop is sacrificed after Bristol opening moves. Solution: 1...Bf5 2.e3 Bd3 3.cxd3 Kg5 4.Kc4 Kf6 5.Rb4 Kxe5 6.b5 exd3#; 1...Be6 2.Kb4 Bxc4 3.Be6 Bd3 4.Bd5 Bxe4 5.Kc4 e3 6.Rb4 Bd3#; 1...Bd7 2.Be6 Bxc6+ 3.Kxc6 Kh4 4.Kd5 Kg3 5.Kd4 Kf2 6.Bd5 e3#.

3<sup>rd</sup> Honorable Mention  
Zlatko Mihajloski



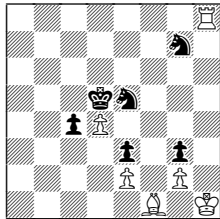
h#7½ (2+5)

4<sup>th</sup> Honorable Mention  
János Csák



h#3½ 2 solutions (6+8)

5<sup>th</sup> Honorable Mention  
Christopher Jones



h#3½ 2 solutions (6+6)

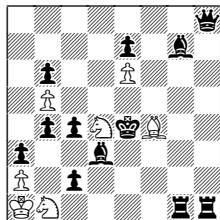
**3<sup>rd</sup> Honorable Mention - (Zlatko Mihajloski - H2616)** The mating square seems obvious, but the order of moves is not. The black King has to move first before the black Rook. A nice tempo move 6.Rd8!. Solution: 1...Kh7 2.Kf2 Bh8 3.Ke3 Kg7 4.Kd4 Kf6 5.Kc5 Ke5 6.Rd8! Ke4 7.Kd6 Kd4 8.Rd7 Be5#.

**4<sup>th</sup> Honorable Mention - (János Csák - H2633)** Good correspondence between solution with white thematic pieces self-pinning to enable the white King to move on the pin-line. Solution: 1...Rg2+ 2.Kxd3 Kxf3 3.Kd4 Ke2 4.Ke4 Rg4#; 1...Bf6 2.Kd2 Kxf5 3.Ke3 Ke6 4.Kf4 Bg5#.

**5<sup>th</sup> Honorable Mention - (Christopher Jones - H2560)** Good ambush moves by the white Rook with one black Knight sacrificing and the other self-blocking. Nice echo. Solution: 1...Rh7 2.Sf3 exf3 3.c3 Bb5 4.Se6 Rd7#; 1...Rg8 2.Sd3 exd3 3.Sf5 dxc4+ 4.Ke4 Rg4#.

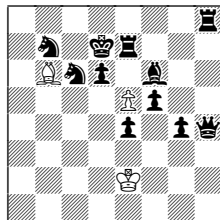
Commendations are not rated.

Commendation  
János Csák



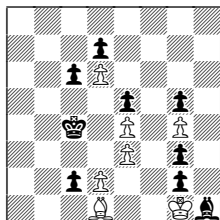
h#3½ b) Sb1→c1 (7+12)

Commendation  
Aleksandr Pankratyev  
& Mikhail Gershinsky



h#3½ 3 solutions (3+11)

Commendation  
Zoran Sibinović



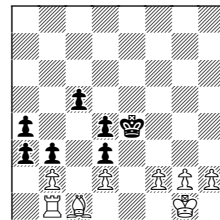
h#4 3 solutions (7+9)

**Commendation - (János Csák - H2562)** Twice unpin-pin-unpin by white S/B pair with different Knight. Each Knight is captured as well. Solution: a) 1...Bc1 2.Kxd4 Sd2 3.Kc3 Sf1 4.Bd4 Bd2#; b) 1...Be5 2.Ke3 Sde2 3.Kd2 Sc3 4.Kxc1 Bf4#.

**Commendation - (Aleksandr Pankratyev & Mikhail Gershinsky - H2588)** Three mates on the same square, one by the white pawn and two by the promoted queen and bishop. The second and the third mates seem the same. Solution: 1...Ke3 2.Rc8 Kf4 3.Ree8 Kxf5 4.Be7 e6#; 1...exd6 2.Rb8 dxe7 3.Kc8 e8Q+ 4.Bd8 Qe6#; 1...exf6 2.Rg7 fxg7 3.Rb8 g8B 4.Kc8 Be6#.

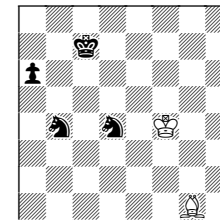
**Commendation - (Zoran Sibinović - H2589)** Good effort to deliver three mates with two minor promoted pieces and the white Bishop rundlauf. However, the harmony between solutions is missing. Solution: 1.Kd3 Be2+ 2.Kxe4 Bd3+ 3.Kf3 Bxc2 4.e4 Bd1#; 1.c1S Bb3+ 2.Kd3 Be6 3.Kxe4 Bxd7 4.Sd3 Bxc6#; 1.c1B d4 2.exd4 e5 3.Kd5 exd4 4.Ke6 Bb3#.

Commendation  
Abdelaziz Onkoud



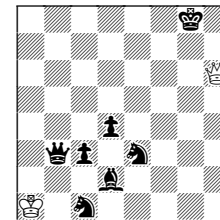
h#4 3 solutions (8+7)

Commendation  
Aleksandr Pankratyev  
& Anatoly Kirichenko



h#5½ 2 solutions (2+4)

Commendation  
Reinhardt Fiebig &  
Rolf Wiehagen



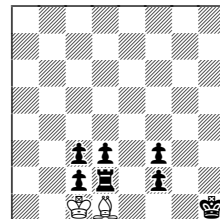
h#5½ (2+7)

**Commendation - (Abdelaziz Onkoud - H2611)** Two promotions to Knights and one to Queen. Good effort. Solution: 1.a2 Kf1 2.axb1S Ke1 3.Sxd2 f3+ 4.Ke3 Bxd2#; 1.axb2 g4 2.c1Q+ Kg2 3.Qc4 Kg3 4.Qd5 Re1#; 1.c4 bxa3 2.c3 Rxb3 3.cxd2 Rb5 4.d1S f3#.

**Commendation - (Aleksandr Pankratyev & Anatoly Kirichenko - H2612)** Two Ideal-mates at the edge of the board with the chameleo-echo effect. Solution: 1...Ke3 2.Kb6 Kd2 3.Ka5 Kc3 4.Sb5+ Kb3 5.Sd5 Bc5 6.Sb6 Bb4#; 1...Ke5 2.Kb6 Kd6 3.a5 Kd7 4.a4 Kc8 5.Ka5 Kb7 6.Sb5 Bb6#.

**Commendation - (Reinhardt Fiebig & Rolf Wiehagen - H2613)** The white Queen makes all the moves and returns to its original square to mate. Solution: 1...Qh1 2.c2 Qxc1 3.Kh8 Qb2 4.c1R+ Qb1 5.Rc8 Qg6 6.Rg8 Qh6#.

Commendation  
Sergey I.Tkachenko  
& Leonid Lyubashevsky



h#6 (2+7)

**Commendation - (Sergey I.Tkachenko & Leonid Lyubashevsky - H2615)** The first Bishop promotion is a nice touch. Solution: 1.f1B (1.f1S/R/Q?) Bxc2 2.Rd1+ Bxd1 3.c2 Kd2 4.c1B+ Ke1 5.Bf4 Kxf1 (Kf2?) 6.Bh2 Bxf3#.

Please send comments to Mike Prcic within three months.